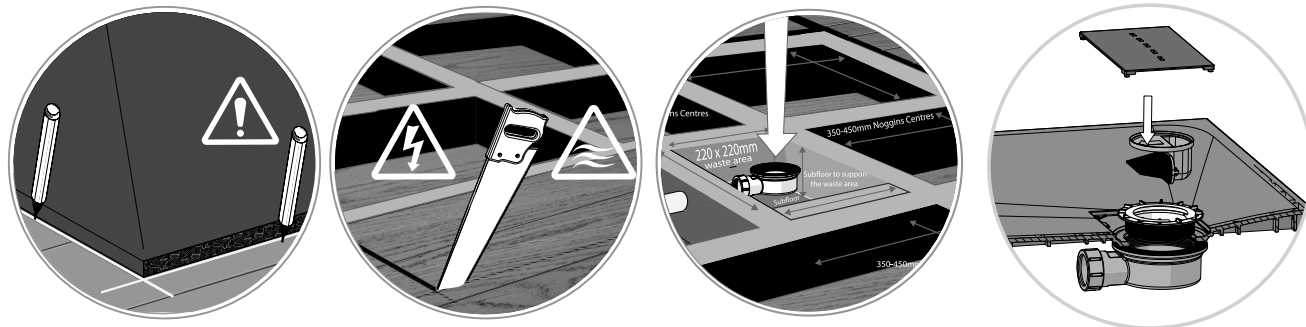


# Installing into Wooden Floors

Position the tray onto floor over the desired location for the shower tight against plaster finish on the back walls in order to provide a seal. Mark around the tray edges onto floor then cut along marked area taking care not to cut through supporting joists or any electrical wiring which may be below and remove the floor boarding.

Install 75 x 50mm (3" x 2") wood noggins between the joists covering the entire tray area and around floor recess edges as shown. These noggins must be installed level for tray to sit level when placed into floor recess on all 4 sides and at minimum of 350mm centres. This will ensure that fall in tray will efficiently drain to waste.

**Additional noggins MUST be placed so that the external edges of the tray and any unsupported flooring is fully supported.**



If required, the joists need packing to raise the tray to the finished floor height and to make the tray level.

The waste needs to be connected to the outlet pipe so that the waste is at the correct height for the tray and there is at least a 1 in 40 fall on the pipe. If the waste pipes have to pass through the wooden floor joists, these should be drilled and not notched from above.

The tray should be bedded onto flexible tile adhesive and checked it is level before it sets.

The waste clamping ring should be fitted to secure and seal the waste to the tray. Install the waste trap, see separate waste instructions.

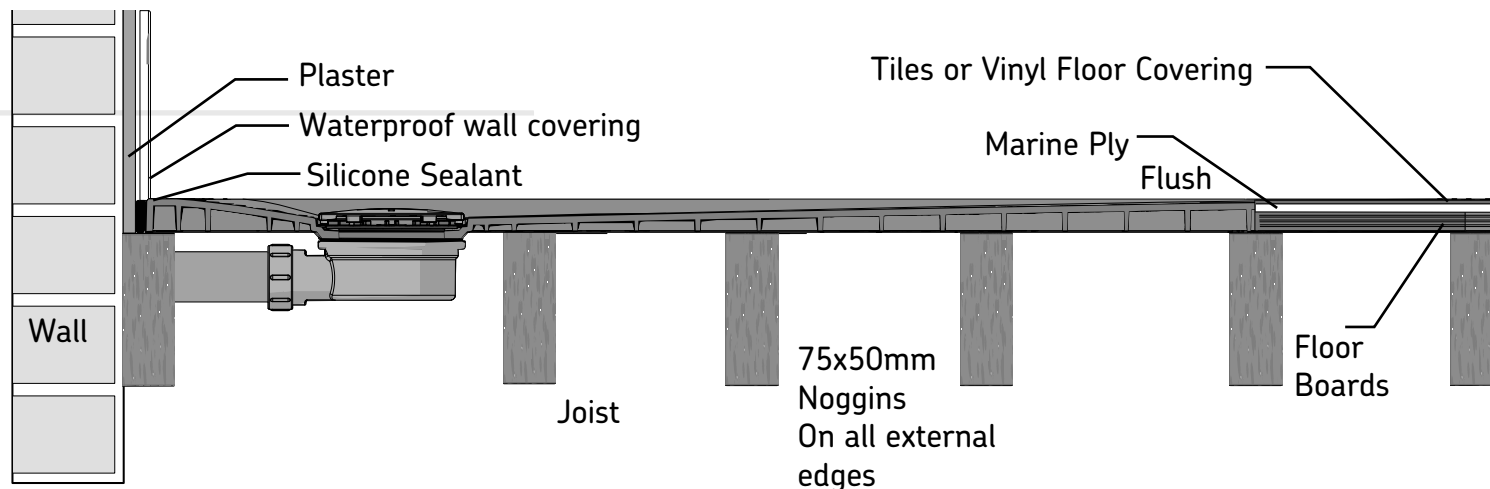
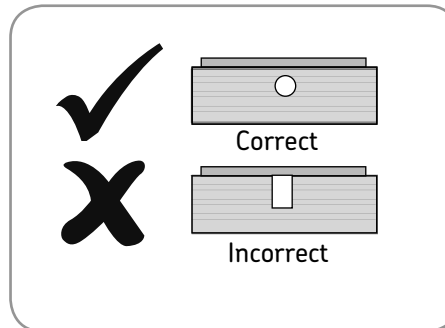
The waste cover should now be secured in place.

Re-check tray is level and test for water drainage efficiency of tray.

Vinyl floor covering or tiles should finish flush and be level with the tray as shown.

The flooring should be laid up to the edge of the tray and sealed with silicone sealant.

The walls should be covered with the waterproof wall covering and then sealed to the tray with silicone sealant.



# Installing into Solid Floors or onto Concrete or Wooden Flooring

Position the tray onto floor over the desired location for the shower tight against plaster finish on the back walls in order to provide a seal. Mark around the waste area and the tray edges on the floor.

**When installing the tray into solid floors.** Remove the tray and start to remove any tiling or vinyl flooring to expose the concrete flooring. Cut along marked area taking care not to cut through pipework or any electrical wiring which may be buried below. Dig out the floor area and remove any hard material to allow for the tray, waste and outlet pipe. Remove the flooring to allow the installation of the waste and the outlet pipe with a fall of at least 1 in 40. When using the low depth waste, dig out approximately 60mm (2 1/2") depth needed under the waste position to allow installation. It may be necessary to remove some more flooring material to achieve this result. Connect the waste to the outlet pipe. Test the waste trap drainage and for leakages by pouring water into the waste trap before fitting to the tray.

Sand and cement should be used to raise the tray to the finished floor height and ensure this is level. Allow this mix to set. Flexible sand & cement mix may then be applied to the subscreed to hold the tray firmly in position and level. Do not dot and dab. Foam should not be used as a load bearing support as it will break down under repeated product use. The edges of the tray must finish flush and level with the top of the finished floor covering.

**When installing the tray onto concrete or wooden floors.** Remove the tray and start to remove any tiling or vinyl flooring to expose the concrete or wooden flooring. The floor finish must be clean, level and it must fully support the tray.

Remove the flooring to allow the installation of the waste and the outlet pipe with a fall of at least 1 in 40. Always follow separate waste installation instructions during installation. Connect the waste to the outlet pipe. Test the waste trap drainage and for leakages by pouring water into the waste trap before fitting to the tray.

**Lower the tray over the waste and check the waste drain position and test that all 4 edges of the tray are level. The tray should be bedded onto flexible tile adhesive and checked it is level again before it sets.**

Connect the waste drain to the tray using the clamping ring. See separate waste instructions. The waste cover should now be secured in place.

The flooring should be laid up to the edge of the tray and sealed with silicone sealant. The walls should be covered with the waterproof wall covering and then sealed to the tray with silicone sealant.

